

Status on Sericulture Industries in the State (31.12.2011)

Introduction:

Presently there are 8529 families practising sericulture in the State and most of them are living below poverty line. The average income of the rearers is Rs. 5,000/- to Rs. 6,000/- per annum. The sericulture activities are being practised in eight Districts of the Pradesh namely Hamirpur, Bilaspur, Mandi, Kangra, Shimla, Solan, Sirmaur & Una. The details of Sericulture Divisions and District are given below:-

Sr. No.	Name of the Division	District covered
1.	Ghumarwin	Bilaspur
2.	Nadaun	Hamirpur
3.	Dehra	Una and part of Kangra
4.	Palampur	Kangra
5.	Mandi	Mandi
6.	Dhaulakuan	Sirmaur
7.	Shimla	Shimla, Solan

1. Details of Mulberry Farms/Nurseries:

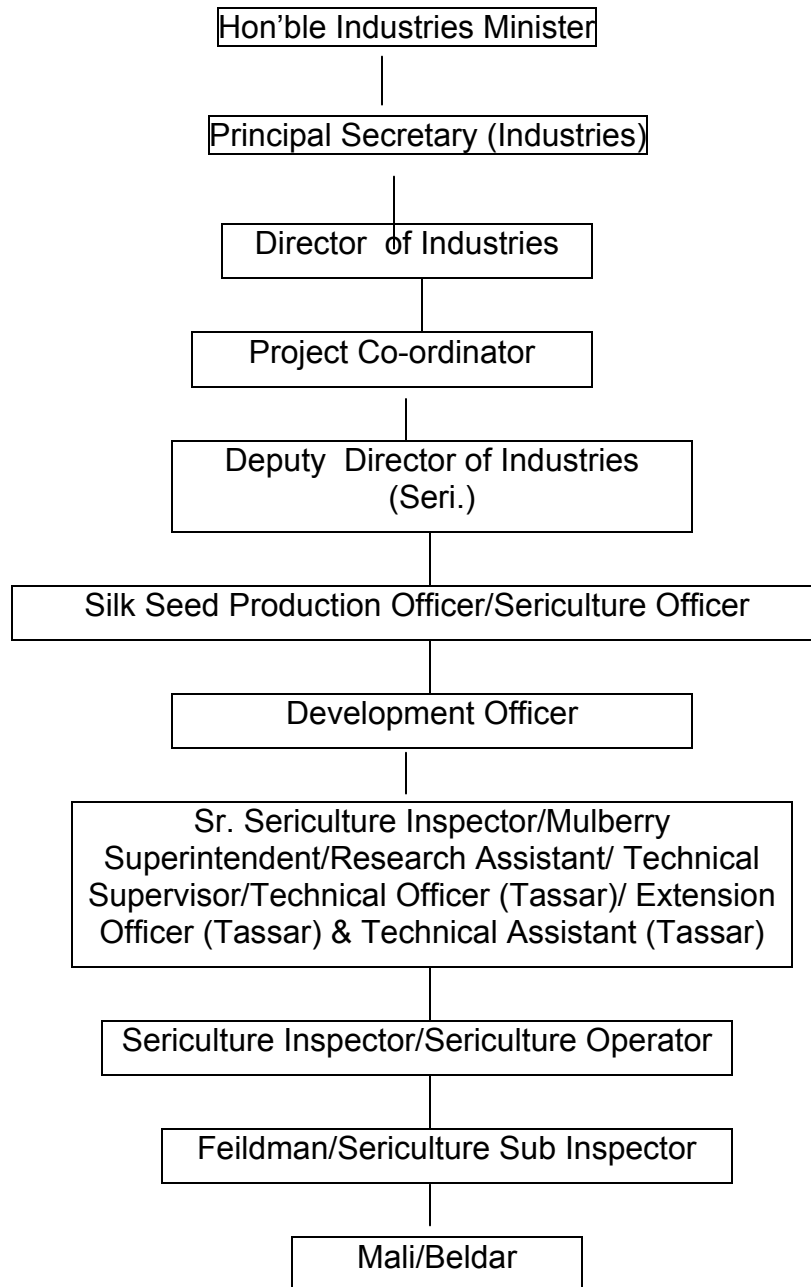
The Sericulture Division-wise details of Mulberry Farms/ Nurseries in Government/private sector is as given below:-

Sr. No.	Name of Division	No. of Mulberry farm	No. of Mulberry Nurseries		
			Govt.	Private	Total
1.	Ghumarwin District Bilaspur	16	3	8	11
2.	Mandi, District. Mandi	33	11	2	13
3.	Nadaun, District Hamirpur	5	2	3	5
4.	Nahan, District Sirmour	8	4	3	7
5.	Dehra, District Kangra	12	3	4	7
6.	Palampur, District Kangra	12	4	2	6
7.	Shimla, District Shimla	3	3	--	3
	Total:	89	30	22	52

2.Organisation set up and staff position:

a) Organisation set up:

Presently sericulture is under the administrative and technical control of Industries Department with headquarter at State Capital Shimla. The organization set up is given below:



b) Staff Position:

The details of posts of sericulture Wing

Sr.No.	Name of Posts	Sanctioned strength	Posts filled in	Posts vacant
1	DDI(Seri)	1	1	-
2	SSPO/SO	4	1	3
3	Dev. Officer (Seri)	2	2	--
4	SSI/Mul. Supdt/ Rea. Asstt/ Tech Sup.	7	7	--
5	Seri. Insp/ Moth Tester/Farm Asstt./ Grainage Sup.	80	46	34
6	Demonstrator	1	--	1
7	Reeling Demonstrator	1	--	1
8	Mul. Sub. Insp/ Seed Exam/ Fieldman/ Budder	28	9	19
9	Beldar/ Mali/ Fieldman	132	127	5
10	Rearing Assistant (Tassar)	11	--	11
11	Manual Asstt.-cum- Chowkidar	4	--	4
12	Un Skilled Workers	10	10	--
13	Workers	2	2	--
14	Tech. Officer(Tassar)	1	1	--
15	E.O. (Tassar)	8	4	4
16	T.A (Tassar)	12	6	6
17	Seri. Operator(T)	10	9	1
	Total	314	222	92

3. Physical and Financial achievements

3.1 Consumption of silk seed and production of Green Cocoons:

Sr. No	Name of Division	2003-2004		2004-2005		2005-06		2006-07	
		Seed (Ozs)	Production (in kgs.)	Seed (Ozs)	Production (in kgs.)	Seed (Ozs)	Production (in kgs.)	Seed (Ozs)	Production (in kgs.)
1.	Ghumarwin	974	42435	974	40413	1009	48778	1059	47304
2.	Mandi	1210	30513	1100	32125	1291	31496	1282	32469
3.	Palampur	463	8372	437	10775	463	11234	482	11971
4.	Nadaun	515	13112	545	15671	605	18516	607	20611
5.	Dehra	550	14426	562	13968	570	21642	588	22210
6.	Sirmaur	260	2857	203	5414	223	6135	252	6911

7.	Shimla	31	582	27	146	25	484	25	600
Total :		4003	112297	3848	118512	4186	138285	4295	142076

Sr. No	Name of Division	2008-2009		2009-10		2010-11	
		Seed (Ozs)	Production (in kgs.)	Seed (Ozs)	Production (in kgs.)	Seed (Ozs)	Production (in kgs.)
1.	Ghumarwin	1155	51521.00	1160	52401.000	1243	456.43
2.	Mandi	1066	24635.450	1056	23243.550	1055	291.84
3.	Palampur	518	13625.650	525	13634.200	535	130.45
4.	Nadaun	615	23828.030	850	28412.605	765	198.50
5.	Dehra	706	27103.890	710	22574.900	780	212.59
6.	Sirmaur	285	10077.000	293	10075.000	289	62.06
7.	Shimla	45	503.500	49	476.400	54	4.95
Total :		4390	151294.52	4643	150817.655	4721	1356.82

Sr.No	Name of Division	2011-2012	
		Seed (Ozs)	Production (in kgs.)
1.	Ghumarwin	1390	56024.00
2.	Mandi	1347	42605.650
3.	Palampur	673	13703.220
4.	Nadaun	785	28256.00
5.	Dehra	820	26435.450
6.	Sirmaur	258	3994.750
7.	Shimla	59	602.200
	CSB & BAIF	169	6222.920
	Total	5501	177844.19

3.2 Production of Raw silk and employment generation:

Sr. No.	Scheme	2003-04	2004-05	2005-06	2006-07
1.	Raw silk production (Qtls.)	13.41	15.45	27.00	31.00
2.	Employment generation (lakh mandays)	4.75	5.75	7.55	5.87

Sr. No.	Scheme	2007-08	2008-09	2009-10	2010-11	2011-12
1.	Raw silk production (MT)	4.10	19.50	19.75	19.20	22.25
2.	Employment	8385	9912	9756	10974	6.00

	nt generation (lakh mandays)					
--	---------------------------------------	--	--	--	--	--

3.3 The details of production & income generated through sericulture

Year	Production green cocoon (kgs.)	Average rate (Rs.)	Total income to farmers (Rs. in lakh)	Percentage increase/decrease
2003-04	1,12,297	191.00	71.67	--
2004-05	1,18,512	225.00	89.18	24.4(+)
2005-06	1,38,285	215.00	98.97	11.0(+)
2006-07	1,42,076	255.00	120.79	22.0(+)
2008-09	151354	325.00	163.46	13.53(+)
2009-10	150816	425.00	212.65	13.0(+)
2010-11	149400	485.00	240.53	11.31(+)
2011-12	177844	525.00	311.22	12.93(+)

4. State Plan Schemes

1) Supply of Chowki Silkworm to the farmers:

The young silkworms (Chowki silk worms) are distributed from Govt. Sericulture Centres at subsidized price of Rs. 20/- per ounce to the farmers. The actual cost of the seed is Rs. 250/- per ounce and the silk seed is supplied from the State Grainage, Palampur and CSB Grainage, Dehradun.

2) Raising/distribution of mulberry saplings to the farmers:

The mulberry nurseries of improved varieties like S-146, TR-50, K-2 and Man day are raised in Govt. Sericulture Farms and one year old saplings are distributed to sericulture farmers at the nominal rates of Rs. 0.25 per sapling. The actual cost of raising mulberry saplings is Rs.2.00 per sapling.

3) Supply of disinfectant material to the farmers for control of silkworms diseases:

To control the silk worms diseases disinfectants such as formuline, sericholar, Vijetha etc. are supplied to the farmers free of cost.

4) Training and technical guidance to the sericulture farmers and improvement of existing infrastructure:

For the successful harvesting of cocoon crop the sericulture farmers are provided technical training and guidance by the sericulture experts and the existing infrastructure like Chawki Rearing Centres, mulberry gardens are improved under this scheme.

5) Grant-in-aid to S.C. Sericulturists for construction of rearing of shed and purchase of equipments:

The schedule caste rearers are given grant-in-aid of Rs. 8,500/- for the construction of rearing mud houses and Rs. 1,500/- for the purchase of silkworm rearing equipments.

Annual Plan Financial Allocations and expenditure under Sericulture
(Rs. in lakh)

Sr. No.	Year	State Plan		Special Central Assistance	
		Outlay	Expenditure	Outlay	Expenditure
1.	2003-04	28.36	26.24	3.00	3.00
2.	2004-05	44.00	37.51	41.75	40.68
3.	2005-06	45.00	47.84	45.11	34.62
4.	2006-07	146.00	52.47	50.00	9.90
5.	2007-08	53.54	51.74	-	-
6.	2008-09	84.56	84.49	25.00	25.00
7.	2009-10	79.99	79.49	30.00	30.00
8.	2010-11	87.06	87.01	20.00	20.00
9.	2011-12	92.00	45.78(31.12.2011)	20.00	8.97(31.12.2011)